



8 Double View Terrace Binningup, WA

 5
  3
  5

Views Galore - A View In Every Direction

Now here's a challenge for you! Find a property along WA's coastline with better views and a better outlook than this one. And, to top it off, you get two homes on the one block!

This two storey home has been uniquely designed to take absolute advantage of its marvelous location. Strong vantage points are everywhere and there are numerous balconies around the house. The cottage also enjoys great views and a large amount of privacy from the main residence.

The main residence features:

- The kitchen is the heart of the home. Separated from the living areas, it is easy to imagine the kitchen as a point of congregation and the large island bench provides a perfect spot for casual dining. Large windows capture the view of the rising sun over the Darling

For more details please visit :

<https://www.summitbunbury.com.au/8148915>

Price: Offers Above \$1,200,000

Council Rates: \$2,320.00/year (approx)

Water Rates: \$300.00/year (approx)



Ruth Nandapi

0419 955 965



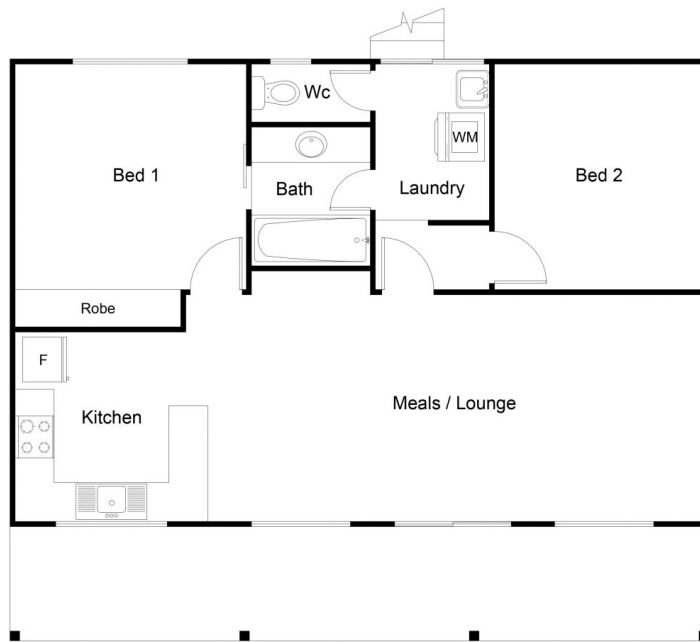
LEVEL 1 PLAN



LEVEL 2 PLAN

This floor plan including furniture, fixture measurements and dimensions are approximate and for illustrative purposes only. BoxBrownie.com gives no guarantee, warranty or representation as to the accuracy and layout. All enquiries must be directed to the agent, vendor or party representing this floor plan.

8 Double View Terrace, Binningup - Main House



FLOOR PLAN

This floor plan including furniture, fixture measurements and dimensions are approximate and for illustrative purposes only. BoxBrownie.com gives no guarantee, warranty or representation as to the accuracy and layout. All enquiries must be directed to the agent, vendor or party representing this floor plan.

8 Double View Terrace, Binningup

8 Double View Terrace

Binningup, WA

